



Life & Times

A publication of Doty Island Development Council, Inc.

ISSUE 2018-3

MOWRY'S TABLE This Year's Fundraiser!

It's *Kickoff Time*—and we don't mean football! Every year we host an annual fundraiser for our Doty Island community. This year the funds will be going to two historic buildings on Doty Island:

Memorial Building—Menasha

Doty Cabin—Neenah

We established Mowry's Table in 2013, named after long-term resident Mowry Smith, Jr. This fundraiser provides an opportunity to continue Mowry's legacy for all those who share his commitment to making Doty Island a better place to live and work.



MEMORIAL BUILDING—MENASHA

The Memorial Building opened its doors in 1928. Menasha uses it for Park and Rec programs, but we were fortunate to use it for the last couple years as a dance hall. It needs some attention before the public would be able to rent it. Funds would be earmarked for new non-fluorescent lighting and new window screens.

DIDC will be donating 50% of the funds to each of the buildings. We will match the first \$500. If you prefer to choose to only one building, please let us know! Our goal is to raise \$1,500. Can you help us reach our goal?

If you would like to contribute to Mowry's Table, please go to our website (PayPal) or send a check made payable to: DIDC-Mowry's Table, PO BOX 894, Neenah, WI 54957.

DIDC will present the final check to each city in January 2019.



DOTY CABIN —NEENAH

This replica of Governor Doty's cabin was built in 1948. Visitors from all over the world visit this monument—about 5,000 to 6,000 a year! The building is owned by the city of Neenah and relies on volunteers to run its programs. Funds would be earmarked for the facility's programs that run from Memorial Day to Labor Day every year.



Saturday, October 13, 2018

Grand Opening of Zuzu's Petals
See article inside

Saturday, October 20, 2018

BOOFEST
Neenah's Farmer's Market
9am-noon

Thursday, October 25, 2018

Hometown Halloween
Downtown Menasha, 4pm—6pm

Sunday, October 28, 2018

Congreg. United Church of Christ
Welcome Pastor Dave
See article inside

Thursday, November 8, 2018

Doty Island Annual Dinner
Island Shores, 7pm– 9pm
See article inside

Saturday, November 24, 2018

Small Business Saturday

Saturday, December 1, 2018

Menasha Holly-Days
Storybook Christmas theme

Friday, December 7, 2018

A Very Neenah Christmas
Downtown Neenah, 6pm—8pm

Friday, December 7, 2018

Holiday Hayride
Memorial Building—Menasha
Tickets go on sale Nov 1 (\$2)

DOTY ISLAND MEMBERSHIP DINNER

Mark Your Calendar!

Every year DIDC hosts a dinner for its members to celebrate another year of accomplishments. Mark your calendars for Thursday, November 8th!

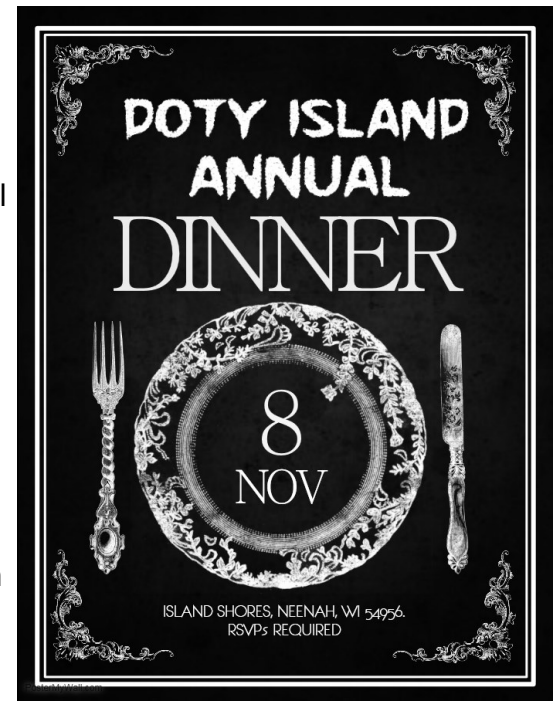
If you are a DIDC member (listed on the last page of this newsletter), you will soon be receiving your invitation to our free Annual Dinner. If you are not a member, you still have time to sign up on our website and be included!

The festivities begin at 6:30pm with a complimentary wine bar

provided by Club Liquor. After a brief introduction, dinner will begin at 7:00pm. After dinner DIDC will give a short program.

- Nomination of the 2019 Doty Island Development Council Board.
- Mowry's Table Fundraiser. This year's benefactors: Memorial Building (Menasha) and Doty Cabin (Neenah)

It's not too late to become a member! Sign up today.



WILDLIFE ON DOTY ISLAND

Squirrels, Rabbits, Turkeys, Foxes, and More!

Even though we live in an urban setting there is much wildlife to be found on Doty Island.

Many of you may be seeing more squirrels and rabbits than in past years. That is, in part, due to the fact that the Island has lost its fox population. Foxes do not pose a risk to humans or their cat and dog pets. Both squirrels and rabbits are its main prey. Nature has a way of orchestrating a balance between animal species.

One morning, while walking, a deer ran right in front of me! We've been seeing more and more deer on the island lately. They most likely swam across Lake Winnebago or the Fox



River to get here. Their population is growing as they have abundant food, compliments of gardens and landscape plants.

Many people feed the birds year round and as a result some smaller hawks are drawn to our yards and the island in general. Sharp-shinned and Cooper's Hawks are the most commonly seen species in urban areas.

They are equipped to fly quickly between trees and around other obstacles. They will eat rabbits, squirrels and other rodents and smaller birds. The other unique bird we have been seeing a lot of is the Wild Turkey. There is a mother and 10 poults that are frequently seen along Forest Ave and Fifth Street, recently on Beaulieu St. They eat grass and especially like insects and berries in summer and acorns and



hazelnuts in fall. With the Lake nearby we are also lucky enough to see abundant Bald Eagles, Pelicans, Great Blue Herons, Great Egrets, Geese and numerous species of ducks. In

spring you may have heard the Loons who stopped by for a rest on their way to the northern Wisconsin lakes.

Some critters are nocturnal so we

may not see them out much during the day. Raccoons, Opossums and even Otters and Muskrats may be Island inhabitants.

I hope the next time you're out walking that you look for and listen to our Island wildlife and appreciate the beauty they add to our neighborhood.

YOU WERE WONDERING? Marathon Gas Station

The building stands dark and empty, doors boarded with plywood, cobwebs of the science fiction order heavily trellising the scaffolding, windows and gas pumps. Not a pretty sight.

This is the Marathon gas station, located on the corner of First Street and Forest Avenue, directly across from Roosevelt Elementary School. It has been a long-time fixture on that busy spot, as most all Doty Islanders know, but its time as a convenient neighborhood gas station is over.

Chris Haese, Director of Neenah's Community Development & Assessments, stated that the only factual data he has on the building's future is that the underground tanks will be removed some time in March

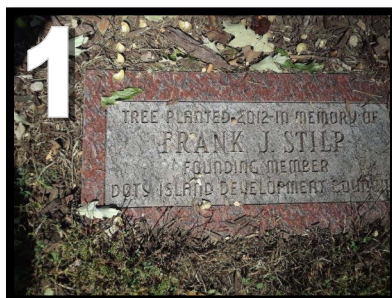
2019, perhaps later. After that, the building will most likely be up for sale.

According to the Findlay, Ohio, corporate office of Marathon gas, the stations are independently owned and operated, thus no information is released concerning viability status. For many people, particularly Doty Islanders, Marathon was for years a mainstay as a reliable place to get gas. And staples like bread, eggs and the occasional carton of orange juice could be bought in a pinch, saving much time for desperate folks not keen on driving to the outskirts of the city for a three-item purchase.



So for the time being, the eyesore on Doty Island will just have to be tolerated for a few more months. Or longer.

But let's look for a silver lining: Halloween is coming up fast. At least the building will be suitably impressive for nourishing the spirit of that spooky time.



WHERE ON DOTY ISLAND?

Ron, one of our board members showed us a picture of a pay phone and asked where we thought it was located on Doty Island. We thought it would be fun to add a section of the newsletter to include "Where is it?" Our group had a lot of fun guessing many of the pictures he showed us. Do YOU know where these are located?

WHERE?

1. At the end of Nicolet Blvd under a tree near the beach.

2. E. Forest Avenue at the original entrance to Roberts Resort.

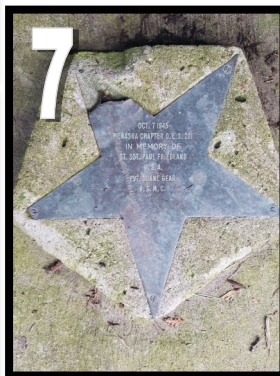
3. Doty Park next to Doty Cabin. Unknown origin.

4. In front of St. Thomas Episcopal Church.

5. Grant Street, Neenah

6. E. Forest Avenue home

7. Smith Park garden area (under a tree).



FRESH SMELLS & COFFEE

ZuZu's Petals

Doty Island has a new business!

Laurie David, owner of Zuzu's Petals, along with her daughter and co-owner Emma David, have opened a store/coffee shop at 303 N. Commercial Street (NE corner of E. Forest and Commercial Streets). Zuzu's Petals will host art events on a regular basis. Live music, poetry, storytelling, and art displays are just a few of the events planned for the shop. The herbs and flowers used in the organic soap products



are grown on the David's family farm in Stockbridge, WI. Coffee is supplied by Kickapoo Coffee Company, a local Wisconsin coffee company. Local artists' works are displayed in the shop and pastries

are provided by local bakeries.

Zuzu's offers gluten-free pastries along with espresso, pour over, French press, drip brew, teas and handmade syrups and homegrown herbs. The boutique store sells homemade soap, shampoos, baby and children's shampoos, and even dog shampoos for Fluffy! All products are organic, all natural, 100% therapeutic grade essential pure oils. No chemicals to worry about! Zuzu's Petals will introduce new products for each season.

Laurie David, Owner of Zuzu's Petals, commented, "I have a passion for promoting organic, back to basics lifestyles. I'm so excited to enter this adventure with my family." Emma says, "I'm excited about providing a

welcoming space for our community to envelop and showcase various art forms."

Zuzu's Petals opened on October 6th, with their grand opening scheduled for October 13th. The grand opening will have live music, storytelling, art displays, and free products for new customers.



Check out their website at www.myzuzuspets.com and their Facebook page for upcoming events (<https://www.facebook.com/zuzupetalsllc/>).

"Let's Get Spooky", their Halloween event, will be held October 26th.

Initial hours are from 10am until 8pm Tuesday through Friday, 8am to 10pm on Saturday, and 8am to 3pm on Sunday.

MENASHA'S HISTORY & MYSTERY WALK

Menasha Historical Society



On Saturday, October 20th, the Menasha Historical Society is hosting a History & Mystery Walk. Meet at Menasha City Hall at 11:00am. Parking is available in the City Hall parking lots. This year they will be featuring current and past businesses located on upper Main Street—which includes the Brin Theater building. Before the walk, many historical photos will be on display. There is **NO COST** to attend this event.

On a side note, the Menasha Historical Society is also creating a booklet highlighting the history of the Brin Theater building. The Historical Society would like to include photos and comments from residents with memories of attending

the theater. To be included, please contact us. Visit our museum on Mondays between 10am and 1pm, call us at (920) 840-4373, or mail information to us at PO Box 255, Menasha, WI 54952.



Business

A publication of Doty Island Development Council, Inc.

ISSUE 2018-3

4SIGHT
group
get4Sight.com

JENNI CATRON
CEO
jenni@get4Sight.com
615-431-3767
@jennicatron
@get4Sight

Club Liquor
234 Main St
Menasha, WI
(920) 725-9247

Freedom Bookkeeping
Karen Rebek
Professional Bookkeeper
KarenRebekPB@gmail.com
(248) 767-5472

Aunt Esther's Attic
A UNIQUE BOUTIQUE
220 Main Street, Menasha (920)
851-9577
www.auntesthersattic.com

COMMUNITY FIRST
CREDIT UNION
We'll Find A Way!
125 E. Forest Ave—Neenah
201 Main St—Menasha

LENDRUM PHOTOGRAPHY LLC

ACE
Hardware
516 N. Commercial Street
Neenah, WI 54956
(920) 722-1113

CORR
OPTICIANS
250 First Street
Neenah, WI 54956
(920) 722-2844

ISLAND
Shores
Independent and Assisted Living

BECHER ELECTRIC CO.
103 MAIN STREET
MENASHA, WI 54952
BY APPOINTMENT ONLY
(920) 843-2345

Chad A Hopfensperger, AAMS®
Financial Advisor
307 N Commercial St Suite 100
Neenah, WI 54956
920-725-7456
Edward Jones
MAKING SENSE OF INVESTING

KAY'S SALON LLC
EDUCATED, FRIENDLY, AND PROFESSIONAL STYLIST
10% OFF for New Customers
314 N. COMMERCIAL ST.
NEENAH, WI 54956
920.725.4101
KAYS5CREW@aol.com

THIS SPACE AVAILABLE

BREW MILL
200 MAIN STREET
MENASHA, WI
54952
920-486-1539
WWW.PRIZEBREWING.COM
Find us on Facebook!

LAW OFFICE OF DAVID C. RASHID
David C. Rashid
Attorney & Counselor at Law
430 Ahnaip Street
Menasha, WI 54952
e-mail drashidlaw@gmail.com
Ph. 920-886-8866
Fax 920-886-0287
www.drashidlaw.com

Please thank your Doty Island Supporters!

The businesses listed on the front and back side of this sheet are Doty Island Business Members, along with Residential Memberships. The Business Memberships also fund our events and community improvement projects. To help you easily recognize the businesses, we've listed their business cards throughout the newsletter.

Bella Ruth Studio

794 Winneconne Avenue, Neenah
(920) 215-0777
Email: bellaruthstudio@gmail.com

Bergstrom Automotive

John Bergstrom
150 N. Green Bay Road, Neenah
(866) 575-8036



Club Liquor

See their business card

Club Tavern

Steve Szymanski
56 Racine Street, Menasha
(920) 722-2452
Email: info@clubtavern.net

Crown Fence, LLC

Miguel Figueroa
Chain link, wood, ornamental, vinyl fences
(920) 858-8095

Dancing Pen Publications, LLC

Victoria Skye, Managing Editor
201 S. Riverheath Way, Suite 1400—Appleton
(920) 727-9899
Www.dancingpenpublications.com



David Magruder, Certified Public Accountant

see his business card



Emprize Brew Mill

** See their business card**

Esprit Counseling & Consulting

Private mental health practice
40 Jewelers Park Drive, Suite 200—Neenah
(920) 720-6000
<http://m.espritcounseling.com>

Fox Valley Dental

Dr. Joseph Olsen
1380 S. Commercial St—Neenah
(920)725-1327

Fox Valley School of M

130 Main Street, Suite 205—M
(920) 915-0744
Stephanie Lynn Hall & Tom Fi
<https://fvsm.massagetherapy.com>

Green Door Music Studio

Email: greendoormusicstudio@
Piano, Molly - (920) 205-9186
Guitar & Bass, Michael
Mandolin, Banjo & Ukulele, O



SMALL BUSINESS

Saturday, November

Consider participating in Small Business Saturday this year. Why? Well, here's a few good reasons!

You'll help create jobs in the community. Money spent in the community will go back into it in the form of creating employment opportunities. When you make a purchase at a small business, you are doing your part to stimulate the local economy.

Your tax dollars stay local. Shopping at small businesses helps keep money within the neighborhood. A series of studies by the research firm Civic Economics found that 48 percent of purchases at local independent businesses go right back into the community, compared to less than 14 percent of sales made at chain stores. Your tax dollars stay locally, going toward public services, better schools, and libraries.

Small businesses give back to their neighborhood. Small businesses do more than just provide products and services beyond writing a check to the bank. They're more likely to donate to local charities and strengthen ties with the neighborhood.

Shopping at one local business instead of other local businesses. Shopping at one local business instead of other local businesses is more likely to stop by other independent businesses in the vicinity. On top of that, shopping at local businesses tend to offer products made locally, creating a stronger local economy.

Small businesses offer unique products. You can get away from the same old, same old products.

**MAKE A
BIG IMPACT
SHOP SMALL**
★
SMALL BUSINESS SATURDAY

Massage

Menasha

ench

.com/

Radio

@gmail.com

ud—(920) 205-9186

Hand to Shoulder Center of Wisconsin

Dr. Nathan Van Zeeland

2323 N. Casaloma Drive—Appleton

(920) 730-8833

Joe Franzoi

Adult Apparel

Email: bill.whitton@collegekids.com



Lemon Loves Lime

See their business card



Mom & Pop Place

** See their business card **

Moving Parts Therapy, LLC

Occupational Therapy for kids

Mary Sahr

W5669 County Rd KK—Appleton

www.movingpartstherapy.com

One Wintry Night Pottery

Karen Wosoba

<https://www.onewintrynightollas.com>

Painting With Light

Nichole Serrano, photographer

Paintingwithlight85@gmail.com

(920) 702-1785

Regency Wealth Management

John Kosmer

201 S. Riverheath Way, Suite 1400—Appleton

(920) 739-5549

www.myregencywealth.com

Town Council Kitchen and Bar

133 W. Wisconsin Ave—Neenah

(920) 558-3500

Zentopic

Media creation specialists

<https://www.zentopic.com>

Zuppas Market Café and Catering

1540 S. Commercial Street—Neenah

920-720-5045



The businesses marked with the poinsettia are current members of Doty Island Development Council



SS SATURDAY

ber 24, 2018

Back to the

businesses go

to a local cause.

Develop partnerships

with people in the

Small business helps

us. By shopping at a

neighborhood, you'll most

likely find independent retailers in

that, some small

businesses offer products that are

unique and have a ripple effect in the

For more unique

than the mass-produced

items found at big box chains by shopping at an independent retailer.

It helps keep communities diverse.

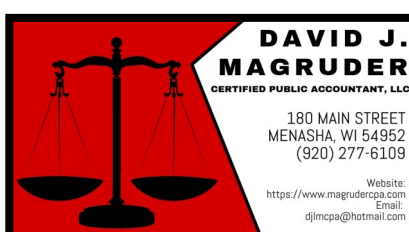
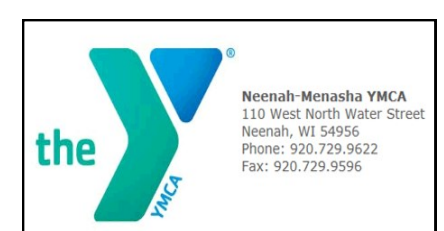
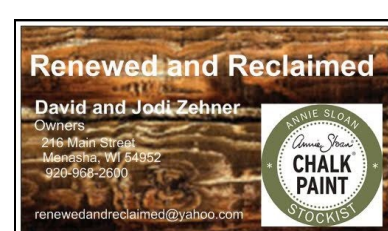
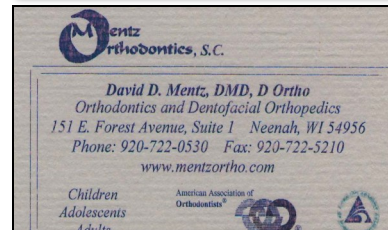
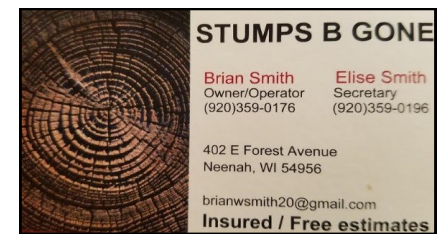
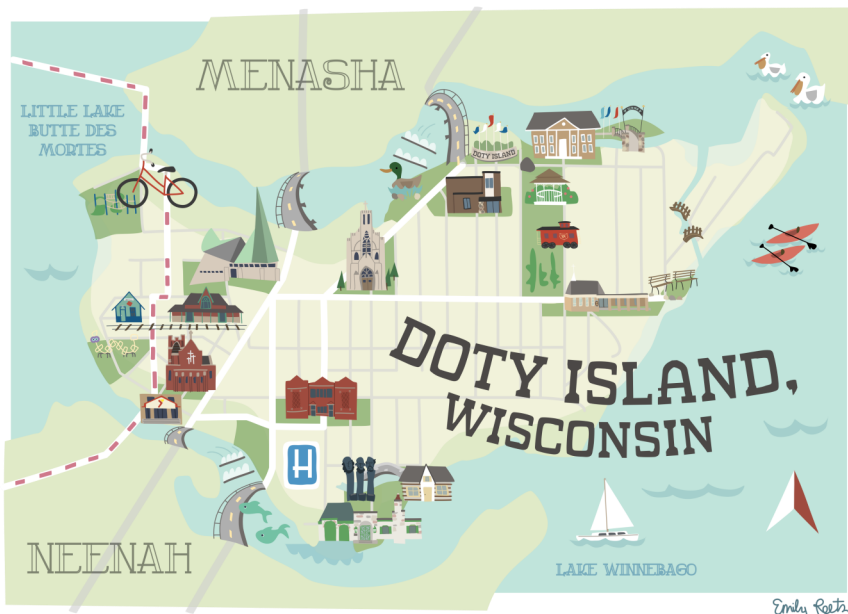
By shopping at small businesses, we're making sure independent businesses thrive by adding to the vibrancy and uniqueness of a community.

On Saturday, November 24th, visit your local eateries, shops, and businesses. It's a great way to get to become better acquainted with your neighborhood and support the community.

On Doty Island's Facebook page, we asked the community, "**Who lives on Doty Island but has a business OFF**

Doty Island?" The businesses listed on this center page were given to us from the Facebook posting and emails. If we missed your company, we apologize!





INVASIVE BUCKTHORN ON DOTY ISLAND Take Action!

Did you know that buckthorn has a foothold on our community? Buckthorn spreads rapidly by seed into natural areas where it out-competes our native trees and shrubs. It creates a dense landscape.

What happens when buckthorn has been planted as an ornamental shrub, hedgerow, shelterbelt, or tree in your backyard? It becomes an impenetrable, messy thicket growth (see picture below). Buckthorn:



- Out-competes the native plants for nutrients, light, and moisture.
- Degrades our wildlife habitat.
- Threatens the future of forests, wetlands, prairies, and other natural habitats.
- Contributes to erosion by out-competing plants on the forest floor that help hold soil in place.
- Serves as host to other pests, such as crown rust fungus and soybean aphid.



- Creates messy fruits that stain sidewalks and drive-ways.
- Lacks "natural controls," such as insects or disease that would curb its growth.

The Doty Island Development Council removed the thick buckthorn at the Doty Island entrance sign on Ahnaip/Racine two years ago and replaced the invasive plants with arborvitae bushes. The area had originally been planted with gorgeous lilac trees, but over the years the trees were snuffed out by the buckthorn.

Menasha has also been taking action! Clovis Grove Park was cleared on Buckthorn this past winter and a plan for Banta Point is being developed. The plan is to systematically replace buckthorn with native screening plantings where needed.

NEW LEADERSHIP Congregational United Church of Christ

We are excited to announce we will be welcoming new leadership to the Congregational United Church of Christ (CUCC). Please help us welcome Pastor Frey and his wife, Maureen, into our community. Pastor David William Frey will lead worship for the first time as our new Pastor on October 28th. Friends and members of our congregation look forward to joining Pastor Frey in our future adventures and passions.

To learn more about Pastor Frey and the Congregational UCC, please check out our website at:

<https://www.cuccnm.org/wp-content/uploads/2018/08/September-2018.pdf>

Join us for worship Sunday mornings at 10:15am, Sunday School at 10:30am. Please check our calendar on our website to learn more about our awesome and uplifting offerings.

We'll Find A Way!



Our Forest Avenue Branch staff
is ready and waiting to help you with
ALL your financial needs.

Left to Right: Lana Kempf, Rhonda Hansen, Desiree Katerzynska,
Kathy Straveler-Stoffel, Lois Fuhrman, Cheryl Otto-Lynch,
Sarah Dunbar-Hester

Stop in today for a visit!

125 E. Forest Avenue
(920) 830-7200
www.communityfirstcu.com



COMMUNITY FIRST

CREDIT UNION

We'll Find A Way!



DOTY ISLAND ANNUAL PICNIC AND PORCHAPOLOOZA AUGUST 2018

DIDC hosted the annual picnic this year at Smith Park. Neenah Officers roasted the hot dogs, Zuppa's donated the pasta salad, Manderfield's donated the cookies and a fun time was had by all!

DIDC also hosted the first ever PorchaPolooza event for Doty Island. Nine bands played around Smith Park for two hours. Each band was sponsored by a local business. We couldn't have done this event without their support! About 1,000 attendees were estimated. The picture in the bottom right are the volunteers that put the event together. Did you enjoy the event as much as we did?



MEMBERS OF THE DOTY ISLAND DEVELOPMENT COUNCIL

INDIVIDUALS

Jennifer Ardnt
Amy Barker
Trina Batley
William Becher
Richard Coveau
Sandra Dabill Taylor
Carol Deprey
Daniel Dubnicka
Gordon Eckrich
Luci Edwards
Kathryn Eisenreich
Sue Erdmann
Pat Farster
Cindy Fitzgibbon
Susan Fredericks
Rex Gromer
Janet Herreman
Joan Hill
Darlene Johnson
Dean Kaufert
Laverne Kons
Betsy Krizeneksky
Cari Lendrum
Paul McAvoy
Richard McCrory
Arthur McFarland
Oswald Rapp
Patricia Remick
Stan Sevenich
Charlie Sheppard
James Taylor
Lynn Thuren
Gloria M. Thurner
Mary Jane Van Lieshout

FAMILY

Deb & Gerry Andrews
Balogh Family
Bill Banti & Joy Cha
Mike & Judy Belling
Wally & Marshelle Bergstrom
Rod & Debbie Birling
Heather &
Jean-Maurice Boyer
Michael & Jehan Brown
John & Ayanda Crispin
Jane & John Crowe
Beth & Charles Dunning

James & Emily Funk
Butch & Julie Grondahl
Tex & Cindy Harding
Ron & Debra Hopfensperger
Michael & Barbara Jirikowic
Ron & Lynnette Klatt
Rob & Jennifer Konitzer
Warren & Roddie Larsen
Andy & Theresa Lauer
Ann Oliver Lepore &
Louis Lepore
Pat & Jean Lowney
Craig & Michele Lynn
Tom & Jeanne Maurer
Tim & Leigh McHugh
Paul & Pat Meier
Lara Vendola-Messer &
Derek Messer
Richard & Martha Moore
Tom & Pat Mottard
Jeff & Becky Nichols
Dr. Joseph & Amanda
Olsen

Ron & Juanita Parsons
Don & Wenoah Paulos
Christopher &
Theresa Reuss
Benjamin S. & Tiffany
Sams
Merrie & Todd
Schamberger
John & Holly Scharer
David & Brenda Schrier
David & Susan Schroeder
Michael & Aubrey
Schroeder

Jerry & Penny Scribner
Hanna Stadem
Paul & Heather Stinson
Strandberg Family
Susan Strange
Patrick & Marcia Streicher
James & Beverly Sund
Joshua Ranger &
Mary Thompson
Danae Steele & Marijke
Van Roojen
Kim & Ellen Vanderhyden
Julien & Lindsay Wechseler

Annemarie Willbanks
Tim & Mory Wrase
Christoph & Mather Zickler
Craig & Anna Zoltowski

SUSTAINING

Frederick & Susan Bartizal
Mike & Terri Bonertz
Joshua & Ruth Buss
John & Liane Butitta
Judy & Charlie Catlin
Jill Enos & Mark Pollard
Scott Francis
Jack & Marcia Fry
Dan & Jennifer Hein
Steve & Becky Heiner
Janet Kautz
Steve & Kim Langlais
Bradley & Barbara
Lauderdale
Susan Hibbs &
Dave Magruder

SUPPORT DOTY ISLAND



Jann & Bill McBride
Joe & Melanie Miller
Dean & Judy Moede
Susan & Pat Morrissey
James Murphy
Michael Rass
Ron & Kay Roberts
Eric & Joanne Roush
Lou & Junko Schifferl
David & Kathleen Schwerbel
Kathy Skog & Greg
Reinhardt
Karen & Peter Strupp
Amy Van Doorn
Karl & Mya Volkman

Michael & Stephanie Vrabec

CONTRIBUTING

Robert Ellis
John, Kathy &
Carol Peterson
Cindy Strong &
Peter Pfundtner
Larry & Evelyn Reddin

SUPPORTING

Dianne & John Bergstrom
Carol & Denny Briggs
Arnie Collier
Margaret L.
Colucciello, PhD, RN
Kim Davis
Steve & Su Figi
Cari-Marie Fleming
Cullen & Sally Henshaw
The Doug Horan Family
Arleigh Hubbard
Yuyun Sejati & Chris Jones
Peter & Anne Jones
Don Koskinen
Don Merkes
Jacy & David Park
Wayne & Candy Rusin
Michael Sajbel &
Susan Allen
Stef Holt & Joe Schena
Jane S. Shepard
Michael & Vicky Steinmetz
Wayne & Ruth Streck
Don & Janet Turner

NON-PROFIT

Congregational United
Church of Christ
Menasha Historical Society
Neenah-Menasha YMCA
St. Paul Lutheran Church
St. Thomas Episcopal
Church
Youth Go

HOME BUSINESS

The 4Sight Group—
Neenah, WI
Becker Electric—

William Becker
Stumps B Gone, LLC—
Brian Smith

BUSINESS PROVIDERS

Aunt Esther's Attic
Brazee's ACE Hardware
Club Liquor
Corr Opticians, Inc.
Dave Magruder, CPA LLC
Edward Jones—
Chad Hopfensperger
Emprize Brew Mill &
The Attic
Freedom Bookkeeping
Island Shores
Kay's Salon, LLC
Lemon Loves Lime
Lendrum Photography—
Jeff Lendrum
Mentz Orthodontics
Mom & Pop Place
Renewed and Reclaimed
Roberts, Ritschke, &
Tyckowski, Ltd.
Shellattes
Wild Apple Gallery
Your Daily Grind

BUILDERS

Megan & Tim Bodway
Law Office of David Rashid
Levenhagen Oil Corp.—
Bruce Levenhagen
Mowry Smith III
Jersild Properties—
Randy Stadtmueller
Thrivent Financial
Nate & Holly Van Zeeland

PATRONS

Patrick & Amy Galloway
John & Mary Sensenbrenner

PARTNERS

Community First
Credit Union



Doty Island Development
Council, Inc.
P.O. Box 894
Neenah, WI 54957-0894

Email:

dotyisland@gmail.com

Website:

www.dotyisland.org

Phone:

Jacy Park (920) 479-0894

The DIDC meets the 2nd and
4th Thursday of every month
at Island Shores from 7-8pm

131 E. North Water Street
Neenah, WI 54956



follow us on
facebook



NONPROFIT
ORGANIZATION
U.S. POSTAGE
PAID
PERMIT NO. 40

SIGN UP: Doty Island Development Council Membership

When you join the DIDC, you show your commitment to improving the quality of life for all Doty Island residents while preserving the vitality of a historic district of Neenah and Menasha.

DIDC is a 501c3 non-profit organization, so your dues and all contributions are deductible to the extent permitted by law.

Membership and contributions are DIDC's sole source of funding.

Sign up at **www.dotyisland.org**
or complete this form and mail with your check to:
DIDC—PO BOX 894, Neenah, WI 54957

Name: _____ Date: _____
Company/Organization: _____
Address: _____
City, State, Zip Code: _____
Email: _____

Residential Membership

_____ Individual	\$20
_____ Family	\$30
_____ Sustaining	\$50
_____ Contributing	\$75
_____ Supporting	\$100

Business & Non-Profit

_____ Non-Profit	\$65
_____ Home Business	\$40-\$99
_____ Providers	\$100-\$249
_____ Builders	\$250-\$499
_____ Patrons	\$500-\$999

Partners

_____ \$1,000+

Endowment Fund

In addition to my regular dues, please add \$_____ to the DIDC Endowment Fund.