



Life & Times

A publication of Doty Island Development Council, Inc.

ISSUE 2019-2

## SUPPORTING LOCAL!

### Midwest Sunsplash Music Festival Benefits Youth Go

This month marks Midwest Sunsplash's third year in downtown Menasha. Did you know the entire festival is organized by Doty Island residents? - and the festival directly benefits Youth Go?

#### SUNSPASH ORIGINS

Kay Halbrook and Pita Kotobalavu, residents of Doty Island, started Sunsplash years ago as a "fun" fundraising project. Pita grew up in the Fiji Islands and loves that we live on an island! Sunsplash is now in its seventh year; only its third year in downtown Menasha.

#### CONNECTING WITH YOUTH GO

Kay knew Kelly Hicks (Youth Go) from working with her at her previous employer. Kay and Pita told Kelly about the fundraising aspect of the Sunsplash event. Kelly agreed that Sunsplash would be a good fit with Youth Go since Youth Go and Midwest Sunsplash have similar motives: Celebrating diversity!

#### YOUTH GO IMPROVEMENTS

Youth Go staff and volunteers work the entire 2-day event. This year Youth Go has a booth featuring the work of their organization and the

artwork of some of their young people. Stop by and check it out.

Since partnering with Sunsplash, Youth Go has expanded their programming for youth to better support their needs! Youth Go has been able to grow their

creative arts programming, offer more opportunities through our SAFE group, and offer additional basic needs support.

#### CELEBRATING DIVERSITY

Midwest Sunsplash celebrates diversity by featuring a variety of musical styles including reggae, salsa, rock, techno and bluegrass. The food and art vendors feature unique

goods, and ethnic food and from many different cultures.

Saturday night will end with a ticketed event, Disco Drag, at the Attic (200 Main St, Menasha) featuring nine performers from around Wisconsin. Information and tickets to this event can be found at [www.midwestsunsplash.org](http://www.midwestsunsplash.org)



## LOCAL EVENTS

#### July 26-27, 2019

Midwest Sunsplash  
Downtown Menasha  
[www.midwestsunsplash.org](http://www.midwestsunsplash.org)

FRIDAY—CURTIS REED SQUARE  
Starts at 5pm

- ◆ Craft brew from Lion's Tail and Fifth Ward.
- ◆ Jodi Gaines & Eleni Skiba (Blues/Rock)
- ◆ Mad Cats Band (Pop Rock)
- ◆ Ants Marching (Dave Mathews Tribute Band)

SATURDAY—THREE STAGES  
Starts at 12:00pm

- ◆ Multiple genres of music
- ◆ Food and art vendors
- ◆ Disco Drag at The Attic

#### Thursday, August 15, 2019

Twisted Pistons  
Downtown Menasha, 2pm—10pm

#### Thursday, August 22, 2019

**Doty Island PorchaPolooza**  
Smith Park, 5:30pm – 8:30pm

#### Saturday, October 19, 2019

BOOFEST  
Neenah's Farmer's Market  
9am-noon

#### Thursday, October 24, 2019

Hometown Halloween  
Downtown Menasha 4pm—6pm

#### Thursday, November 14, 2019

Doty Island Annual Dinner  
Island Shores, 6:30pm-9:00pm

## WALKING INTO WELLNESS

### On Doty Island

We live, work, and play on Doty Island. How about walking more to take in the beautiful sites of the many parks, wildlife, friends and neighbors, all while walking into better health and wellness?

#### Physical Wellness & Social Interactions

It is a great way to meet new friends, spend time outdoors, and improve your overall health and wellness. Did you know that walking as little as 30 minutes a day you can:

- ◆ Increase your heart health
- ◆ Strengthen your bones
- ◆ Reduce unwanted body fat and maintain a healthy weight
- ◆ Increase your muscle power and your overall endurance
- ◆ Prevent or manage health conditions, including heart disease, high blood pressure and type 2 diabetes

#### Mental Wellness

Walking can do wonders for your mental well-being. Being active has a wide range of benefits when it comes to mental health and wellbeing. Walking can:

- ◆ Improve self-perception and self-esteem
- ◆ Improve your overall mood and outlook
- ◆ Improve your sleep quality and duration so you feel more rested and alert in the morning
- ◆ Reduces stress levels and gives an outlet for helping to manage stress
- ◆ Reduce anxiety and fatigue

Walking is easy and free! No monthly fees, no memberships.

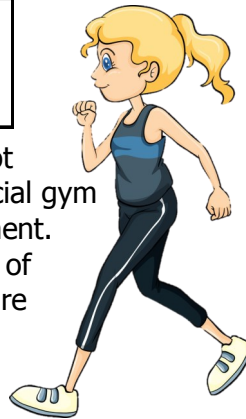
Walking does not require any special gym or home equipment. Just a good pair of shoes and you are ready to hit the streets of Doty Island.

#### A Few Safety Tips!

What should you think about while walking to keep you safe and help prevent injuries?

1. The feet should be pointing forward when we walk with the heel striking the ground first and rolling onto the toes. Check your feet for calluses – they are the tell tale sign of walking / standing posture.
2. Hold your shoulders gently back allowing your arms to freely swing front to back.
3. Avoid swinging your arms side to side. This can contribute to back pain.
4. Ensure your neck is over your shoulders. Avoid allowing your head and neck to lead the way. Putting undo stress and strain on your neck muscles can lead to headaches.
5. Your ears should be over your shoulders so you can look up and all around. Avoid looking directly down at the ground when you walk.

Stephanie Lynn Hall is co-owner and Director of Education of Fox Valley School of Massage, Yoga & Personal Training. If you would like more information, please visit [www.FoxValleySchoolofMassage.com](http://www.FoxValleySchoolofMassage.com)



## 2019 DOTY ISLAND PLANTERS

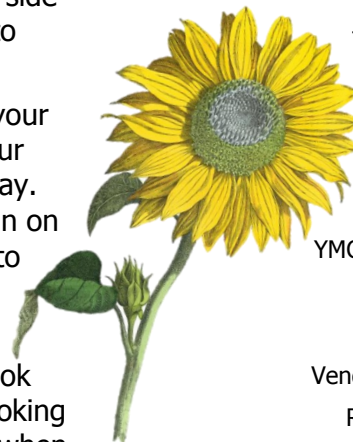
### Residents & Businesses

The Doty Island planters are gorgeous again this year! Volunteers from Congregational United Church of Christ (CUCC) planted the flowers as part of their annual Service Sunday event.

Todd Mitchell, the owner of Bella Ruth Studio (and Doty Island Resident) worked with Brazee's ACE Hardware to order the plants, arranged the plants for each planter and led the CUCC group on a wet Saturday morning to have the planters completed before the Memorial Day parade.

Thank you to the following patrons for continuing to financially support our beautification project!

Bella Ruth Studio,  
Zuppa's Cafe  
Dave Magruder, CPA  
Community First  
The Kelly Padghams  
Smokin' Pig Express  
Tiffany Sams  
Neenah Club  
Volkman Family  
YMCA Neenah/Menasha  
Town Council  
Shellatte's Coffee  
Vendola –Messer Family  
Ron & Lynnette Klatt  
Fox Valley Dental  
Kay's Salon  
Anna & Craig Zoltowski  
Ann Oliver Lepore & Louis Lepore  
Jeff Lendrum & Linda Scott Partons  
Penny Scribner  
Storm—The Lawn Pro  
Congregational United Church of Christ  
ACE Hardware

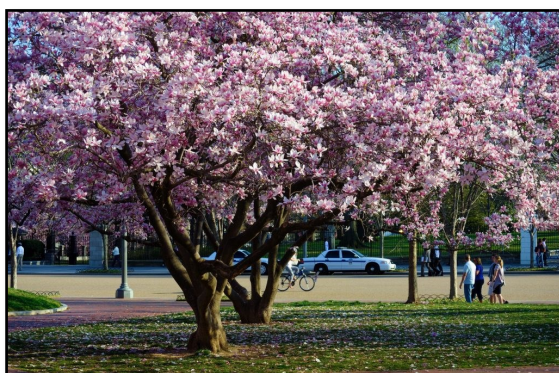


## STEEL MAGNOLIAS?

*Spring has sprung,  
The grass has riz,  
I wonder where the magnolia is.*

Grammatically incorrect but we get it. And we DO have the birdies. What we don't have is consistent, warm, lovely weather. (And it's mid-June as this is written.) Maybe that's why our magnolia trees are suffering. Have you noticed? The dependable, luscious display of early spring magnolia blossoms barely made a dent this year. It's a magnitudinal loss of intense beauty.

The mighty magnolia has always graced plenty of yards and parks on Doty Island.



Named in the 1600s after the French botanist, Pierre Magnolia, this gorgeous tree offers more than 80 flowering varieties including the popular goldfinch and of course, the white bloom, *Magnolia grandiflora*. This year, trees have been ravaged, often beyond help; others are hanging on with a few decent leafings left. But this bodes poorly for continued survival. On Doty Island alone, several cases of total loss have been documented. Because they bloom so early, they are vulnerable to damage by late spring frosts in the Midwest, and this is what may have happened. (Morton Arboretum.) Indeed, it was a cool, often cold, spring of 2019. There is also infection. Referred to simply as **scale**, it is the magnolia scale, one of the largest INSECTS of the scale genus and is found in the United States (**Magnolia scale** - *Neolecanium cornuparvum*). Its primary host is magnolia, the Star

Magnolia being a favorite munch. This species of tree is native to the United States and is widely distributed throughout the eastern part. The process of infestation is a bit complicated to detail here in our small newsletter space but primarily, the road to damage begins the summer before. Magnolia scale overwinters

as nymphs on one-or two-year-old twigs. Nymphs mature in late July through early August, with males emerging about the same time as small fly-like insects which mate with females and then die. Females later give birth to living young called crawlers in late August or early September. Larvae and adults of certain lady beetles feed on this scale insect, exercising some natural control in late summer and September. These nymphs, or crawlers, wander about for a short period of time prior to settling down on the young twigs where they overwinter. And thus the new spring presents a scrumptious fresh meal of plant fluids for nymphs, resulting in reduction in foliage and flower production. Twig and branch dieback may also occur. Twigs of the host plant that are normally light green appear enlarged and purple from a massive magnolia scale infestation. This soft scale also

secretes large amounts of honeydew which gives the plant an unsightly appearance; black sooty mold develops on the sticky honeydew. The honeydew attracts large numbers of ants, wasps, yellow jackets, and other noxious insects.

Is there a cure? Prevention, yes, but no guarantees. Happily, larvae and adults of certain lady beetles feed on this scale (insect), exercising some natural control in late summer. The rest of protection requires insecticide/pesticides that should be applied in a timely manner. Consulting a professional in this arena is the best thing to do.

### SIDE NOTE:

Brazee's ACE Hardware has a pesticide specifically for scale. Pick up a bottle of "Ortho MAX Tree & Shrub Insect Control".

Pictures below show mature magnolia scale. Pictures courtesy from Ohio State University.



Joe Boggs, OSU Extension©





## SWEET SOUNDS 315 First Street—Neenah



Samantha Krupp launched her business, Sweet Sounds, in August of last year. You may recognize her building—it's the round building at 315 1st Street! The "Sounds Alive" sign is still out front, but don't let that fool you!

Samantha used to give piano lessons out of her home. Her home lessons were so popular that she needed a larger, permanent space. Sweet

Sounds offers music lessons for almost any instrument you can think of: voice, piano, guitar, ukulele, percussion, wind, strings... you name it! Lessons

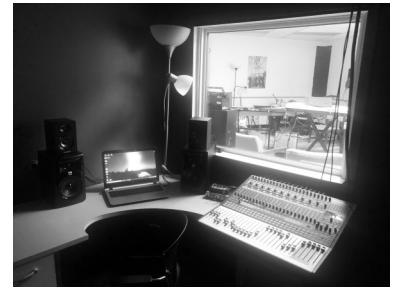
are \$15 per 1/2 hour which includes the music programs. Samantha is most focused on piano and saxophone, but she will recommend you to one of the



other instructors sharing the Sweet Sounds building if she doesn't teach your instrument.

Instructors rent their rooms from Sweet Sounds for a monthly fee. There are currently two rooms available if you know anyone that may be interested.

If you want to use a full recording studio, Sweet Sounds rents theirs! Rental is \$20 per hour and an additional \$10 for recording.



Two other programs you may be interested in are Tot Time and Senior Lessons. Tot Time is a 45-minute Wednesday night program for kids under five years old. The kids play music-themed games. Any kids under 18 months are required to be accompanied by an adult.

If you are a senior citizen (55+ in this case), you can receive lessons for \$5 each! Studies show that participating in piano lessons helps with cognitive improvement, improving memory and clarity.

So, if you've been wanting to start lessons or want to continue where you left off, give Sweets Sounds a call! Their website is: [www.sweetsoundsllc.com](http://www.sweetsoundsllc.com)

## NEW BEGINNINGS ON THE ISLAND

"The only way to make sense out of change is to plunge into it, move with it, and join the dance."  
Alan W. Watts, American-British philosopher

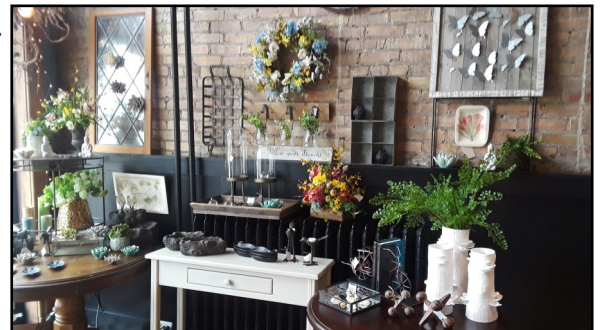
### FISH FRY, LLC PROPERTIES

Two-one-six (216) N. Commercial Street has been purchased by Fish Fry Properties, LLC, out of Denver, Colorado. New owner Todd Parker, formerly of Appleton, WI, plans to renovate the building for rental use. The familiar towering, tinted window of this building is a well-known sight to many Islanders and has housed numerous enterprises over the

years. We wish Mr. Parker good luck and await whatever fresh, new changes take place. Stay tuned!

### LA BELLE MAISON

Welcome La Belle Maison to its new location at 303 N. Commercial St., in Neenah. It's located at the N.E



corner of Forest and Commercial. The French meaning of La Belle Maison is "a beautiful home". The Interior Design Studio and Retail Shop is owned and operated by Sandi Pufahl, a

Doty Island resident. La Belle Maison's offerings include home and garden décor, unique lighting, florals, art, small repurposed furniture, gifts plus thousands of fabrics for window treatments, pillows & cushions, and re-upholstery. Hours are Tuesday through Friday from 11am to 5:30 pm and Saturdays from 10:00 am to 4:00 pm.



two cities  
one community  
**DOTY ISLAND**



Business

**4SIGHT**  
group  
get4Sight.com

**JENNI CATRON**  
CEO  
jenni@get4Sight.com  
615-431-3767  
@jennicatron  
get4Sight

**Club Liquor**  
234 Main St  
Menasha, WI  
(920)725-9247



**ISLAND**  
*Shores*  
Independent and Assisted Living



*Aunt Esther's Attic*  
A UNIQUE BOUTIQUE

220 Main Street, Menasha (920)  
851-9577  
www.auntesthersattic.com



**COMMUNITY FIRST**  
CREDIT UNION  
*We'll Find A Way!*

125 E. Forest Ave—Neenah  
201 Main St—Menasha

KAY'S SALON LLC  
EDUCATED, FRIENDLY, AND PROFESSIONAL STYLIST  
**10% OFF for New Customers**



314 N. COMMERCIAL ST.  
NEENAH, WI 54956 920.725-4104  
KAYS5CREW@aol.com

**ACE**  
**Hardware**

516 N. Commercial Street  
Neenah, WI 54956  
(920) 722-1113



**Chad A Hopfensperger, AAMS®**  
Financial Advisor  
307 N Commercial St Suite 100  
Neenah, WI 54956  
920-725-7456

**Edward Jones**  
MAKING SENSE OF INVESTING

**Lemon Lime**

192 Main Street  
Menasha, WI 54952  
920-486-3653  
Unique Children's Clothing



Proudly serving Chocolate Shoppe Ice Cream

**BECHER ELECTRIC CO.**

103 MAIN STREET  
MENASHA, WI 54952  
BY APPOINTMENT ONLY  
(920) 843-2345




200 MAIN STREET  
MENASHA, WI  
54952

920-486-1539

WWW.EMPRIZEBREWING.COM

Find us on Facebook!

**LUIGI'S**

332 Ahnaip St, Menasha  
(920) 722-8000

**BEISER**  
REALTY, LLC

TEAM TRI COUNTY

**Sue Hietpas**  
920-851-1830  
Sue@BeiserRealty.com

**Ryan Ellis**  
920-750-9834  
Ryan@BeiserRealty.com

**Fox Valley School of Massage**  
Yoga & Personal Training  
The Art & Science of Massage & Movement

Tom Finch, WLMT, CPT, E-RYT  
Stephanie Lynn Hall, MS, RDN, CSCS, WLMT, E-RYT  
Owners & Instructors

130 Main Street \* Suite 205  
Menasha, WI 54952  
www.FVSM.org

FVSMinfo@aol.com  
920-915-0744

**DAVID J. MAGRUDER**  
CERTIFIED PUBLIC ACCOUNTANT, LLC

180 MAIN STREET  
MENASHA, WI 54952  
(920) 277-6109

Website:  
https://www.magrudercpa.com  
Email:  
djmcpa@hotmail.com

**FISH FRY**  
PROPERTIES

Todd Parker, President  
303 393 1363

1090 Holly Street  
Denver, CO 80220  
todd@fishfryproperties.com



LENDRUM PHOTOGRAPHY LLC

**momandpopplace**

117 W. Wisconsin Avenue  
Neenah, WI 54956  
(920) 725-0488



# DOTY ISLAND'S PORCHAPOLOOZA

THURSDAY, AUGUST 22

5:30 to 8:30 pm

Did you attend our first Doty Island PorchaPolooza Event last year? We had such a positive response to the free family-friendly event that we are doing it again. Mark your calendars!

## THE BANDS, SPONSORS, & HOSTS

PorchaPolooza would not be possible without our community residents and businesses! DIDC found Doty Island residents that live around Smith Park to volunteer their front porch and electricity for the 3-hour event. DIDC sought the music acts and matched each act with a business sponsor. This year we were able to coordinate ten music acts for Doty Island's event.

Last year many attendees stated two hours was way too short for this event. To be able to extend the event by one hour, we will be staggering the acts. Half of the music acts will play from 5:30pm to 7:30pm and the other half will play from 6:30pm to 8:30pm.



## SAFETY FIRST, PLEASE

We care about your safety! We encourage you to bring your bikes, walk or use other transportation besides vehicles.

Please stay in the yard or on the sidewalk. Avoid standing in the street or blocking any traffic.



## FOOD TRUCKS

There will be two food trucks available during the event. The Dough Shoppe and TTZ BBQ.

The Dough Shoppe is located in Green Bay and specializes in raw cookie dough (edible—no eggs!) and also has gluten-free options.

TTZ BBQ is a Menasha business which serves fantastic walking tacos and other barbeque options.

Visit their Facebook pages!

**DAVID**  
reet  
nal Funky Folk

BY:

**ELVIS JOHN**  
364 Park Street  
The Elvis tribute show.

SPONSORED BY:  
Mayor Don Merkes  


**ADRIA RAMOS**  
1313 Nicolet Blvd.  
Indie Acoustic.

SPONSORED BY:  


This event is possible  
due to the generosity of  
the neighbors that  
offered their porches  
and business sponsors  
that made this event  
possible!



**Musicians  
outlined in  
BLACK/ DASHES  
play from  
5:30 to 7:30pm**

**Musicians  
outlined in SOLID  
LINES/RED play  
from  
6:30 to 8:30pm**

**TEDD YOUNG**  
1213 Nicolet Blvd.  
Just good 'ol fun-loving  
music!

SPONSORED BY:  


**SKIPPER JACK**  
393 Cleveland Street  
A band with a little bit of  
everything!

SPONSORED BY:  


**ARKS**  
and  
ng popular



**DOTY ISLAND**  
two cities  
one community



NICOLET BOULEVARD

## ARTISTS IN THE PARK

"Artists in the Park" will also be occurring in the same space as PorchaPolooza. Local artists (all styles of visual and fine artists) will be working on pieces and sharing their work from 5pm—9pm. If you'd like to be involved with this part of the event, please contact [artnnews@gmail.com](mailto:artnnews@gmail.com)



## SIDEWALK CHALK ARTIST

Amanda Zehren is a local artist that specializes in chalk art. Amanda grew up in the Fox Cities. About seven years ago she started a one-woman movement spreading joy through art by surprise chalking fun scenes for family and friends in front of their homes. Now she competes throughout Wisconsin and even holds a few championship titles. She enjoys creating art that makes a difference and spreads love and humanity throughout the community.

## PLAN FOR A RAIN DATE

There's always the possibility that the event will be rained out. In case of inclement weather, the following Thursday will be the rain date. So, just in case of cancellation, mark your calendars for Thursday, August 29th.

## \$5 VOUCHER FOR DIDC MEMBERS

If your name or business is listed on Page 11 of this newsletter, you will receive a \$5.00 voucher to use for either of the food trucks during PorchaPolooza. The \$5 voucher is good only during the event.

The vouchers will be postcards which will be mailed the first week in August. Don't lose it! No replacements will be given.

Any new members between now and August 1st will also receive a \$5 Voucher. So, join today!




## BATHROOMS DURING THE EVENT

Bathrooms are located at the Smith Park Pavilion. Homeowners will not be offering the use of their bathrooms.



**75 CENTS OFF  
A SMOOTHIE**



330 N. Commercial St.  
Neenah, WI 54956  
(920) 886-3094

**Sure-Dry Basement Systems Inc.**

754 West Airport Road  
Menasha, WI 54952  
[kim@suredrybasements.com](mailto:kim@suredrybasements.com)  
Phone: (920) 299-5240  
Website: [www.suredrybasements.com](http://www.suredrybasements.com)

## LAKE EDGE CHILDCARE Close to Home!

Are you a parent looking for childcare close to home? Does your flexible work schedule require flexible and dependable childcare? Perhaps you're interested in a unique pre-school experience for your child? Lake Edge Learning Center offers all of these and so much more.

Lake Edge Learning Center is located at the end of Nicolet Boulevard, inside the Congregational United Church of Christ of Neenah-Menasha. Although it's located inside the church building, no religious education takes place at the pre-school. Lake Edge is staffed with certified teachers, is licensed by the State of Wisconsin and is the only nature-based center in Wisconsin.

The mission of Lake Edge is to "guide each child's development through nature and process based learning."

What does this mean? Lake Edge sees each child as a unique individual.

Through creative curriculum, children are engaged in hands-on activities that encourage exploration and discovery.

Lake Edge Learning Center also offers wrap-around childcare. This means that our childcare services fit the needs of working families and school-age children. Breakfast, lunch and an afternoon snack are provided at the center.

Childcare and pre-school are offered for 2, 3 and 4 year-olds. Rates vary according to the class and applications are on a first come first serve basis for new students.

Please consider this hidden gem at the end of Nicolet Blvd! If you would like more information, you can visit [www.lakeedgelearningcenter.com](http://www.lakeedgelearningcenter.com) or call 725-6139.



**Mentz Orthodontics, S.C.**

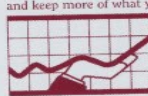
David D. Mentz, DMD, D Ortho  
Orthodontics and Dentofacial Orthopedics  
151 E. Forest Avenue, Suite 1 Neenah, WI 54956  
Phone: 920-722-0530 Fax: 920-722-5210  
[www.mentzortho.com](http://www.mentzortho.com)

Children  
Adolescents  
Adults

**the Y**

Neenah-Menasha YMCA  
110 West North Water Street  
Neenah, WI 54956  
Phone: 920.729.9622  
Fax: 920.729.9596

Helping you to earn more,  
and keep more of what you earn.



**Roberts,  
Ritschke &  
Tyczkowski, Ltd.**

Certified Public Accountants--

Island Professional Building • 335 First Street  
P.O. Box 679 • Neenah, WI 54957-0679  
920-722-2141 • 1-800-926-2093  
Fax: 920-722-8637 • E-mail: [rtt@rrtcpa.com](mailto:rtt@rrtcpa.com)  
[www.rrtcpa.com](http://www.rrtcpa.com)

**YOUTHgo**

213 Nicolet Blvd, Neenah  
(920) 722-1435



The Historic Jersild Knitting Mill

**SA**

Stadtmueller  
& Associates  
placemaking

333 N. Commercial Street  
Neenah, Wisconsin  
[stadtmuellerandassociates.com](http://stadtmuellerandassociates.com)  
920-716-7297

**DESIGN 22, LLC**



196 Main St.  
Menasha, WI  
(920) 450-9340

## You are the reason for everything we do.



Whether serving member-owners on Doty Island or giving back to the community, everything we do is for everything you need, want and dream to do.



125 E. Forest Ave. • (920) 830-7200  
[www.communityfirstcu.com](http://www.communityfirstcu.com)

Become a member-owner at your local Forest Ave. branch or any of our other 25 Northeast Wisconsin locations.



## EVOLUTION OF THE DOTY ISLAND DRIVING PARK

"Sporting Men of Menasha and Neenah Talk of Opening a Driving Park"  
Saturday Evening Press, May 22, 1879.

Since 1868, six years before Menasha was incorporated, numerous prominent Menasha and Neenah men interested in horses banded together to bring horse racing to Doty Island. The Menasha Driving Park Association formed on June 25, 1868. The goal was to raise \$15,000 worth of stock in increments of \$25/share, but the 49 Charter members purchased only 60% of that amount.

The purpose of the Association was "to purchase the sixty-one acres of land owned by B. Frank Moore, on Doty Island, and to fit and use the same for a Driving Park and fairground". Curtis Reed was elected President and E.L. Mathewson was the Association Secretary. It seems, from a cursory review of papers across the East Coast and Midwest, that building Driving Parks and hosting horse races seemed to be all the rage in that timeframe. Ultimately the Menasha Driving Park Association ran into issues raising the funds necessary to buy a portion of the 60-acre tract from B. Frank Moore or to convince him to sell it for less.

In 1879, another group of investors from Neenah and Menasha formed The Doty Island Driving Park Association to attempt the same mission. In late May 1879, B. Frank Moore Esq. of Fond du Lac spent the

week in Neenah and Menasha talking with men from both cities and decided it was the right time for him to sell 20 of his 60 acres of Doty Island property. The Saturday Evening Press of June 12, 1879



announced the sale and purchase. The new board for the Doty Island Driving Park consisted of C.S. Felton, President; F.C. Shattuck, Vice President; G.W. Dodge, Secretary; Ex-Neenah

Mayor Krueger as Treasurer; Miles Wheeler and John Roberts. They planned to have the race track ready for the upcoming July 4th holiday, but that was not to happen.

On June 26, 1879 Miles Wheeler and C.S. Felton received a contract to build the racetrack and fence in the 20 acre Driving Park. The Doty Island Driving Park was formally dedicated on Saturday, September 6 with a Matinee race.

The first race was the pacing race, best two in three-mile heats.

Horses entered were E. L. Mathewson's brown gelding, Sleepy Dave and T. Strange's cream mare, Flora. The race was won by Sleepy Dave with a time of 1.28.

The second race was a trotting race, best two in three-mile heats. Horses entered were P. V. Lawson's black gelding, Little Crow; Morgan Syme's bay mare, Topsy; and N. Conover's sorrel gelding, Billie Morgan. The race was won by Little Crow with a time of 2.49.

The third race was best two in three-mile heats. Horses entered were O. W. Clark's bay stallion, Telulah Chief; J&G Morris' black stallion, Colonel Cloud. The race was won by Colonel Cloud with a time of 2.50.

The gate receipts were about

sixty dollars. There were a large number present from Oshkosh and Appleton and all were enthusiastic in their praise of our new park and track.

Thus began twenty years of horse racing at the Doty Island

Driving Park. But the Driving Park was much more. It became a favorite fairground and was used by several entities for a wide variety of sporting events such as



Continued on Next Page

## DOTY DRIVING PARK

Continued from Previous Page

baseball, football, track, bicycle races and viewing grounds for yachting regattas on Lake Winnebago. In addition, George Morris provided services for breaking colts, training horses for the track, and handling horses. As he advertised, "I can always be found at the Doty Island Driving Park - CHARGES REASONABLE."

On April 9, 1900, the Doty Island Driving Park land was purchased by Charles R. Smith, son of Elisha D. Smith and President of the Menasha Woodenware Corporation. The Neenah Driving Park was situated south of Nicolet Boulevard ("The Avenue" before 1900) and east of Park Drive, Neenah. Charles gave the land to his son, Mowry Smith Sr. who built a house deep in the woods of the original Driving Park long before either Beaulieu Road or Kittiver Court existed. In fact, Kittiver Court was named after Mowry Smith Sr.'s wife Katherine Ives.

A 1938 aerial overflight photograph (SHOWN ON PREVIOUS PAGE) clearly shows where the Doty Island Driving Park ½ mile oval race track was situated on the property. The original Mowry Smith Sr.'s home was built in 1911 and can be seen in the photograph deep in the woods in the area where Kittiver Court was ultimately developed.

If you have additional information on the Driving Park or any old family photo albums that show life on Doty Island in the late 1800's and the early 1900's contact the Menasha or Neenah Historical Society or me at [heimermanjeff@gmail.com](mailto:heimermanjeff@gmail.com)

# DOTY ISLAND's QUICK RECAPS

## DOTY ISLAND FAMILY DAY

June 29, 2019

The Neenah Historical Society and the City of Neenah (Doty Cabin volunteers) teamed up for Doty Island Family Day. Attendees enjoyed Dairy Queen popcorn, lemonade, tours of Doty Cabin, story-telling, games and carriage rides.



## DOTY ISLAND CLEANUP DAY

May 4, 2019

We had 60 volunteers come out for the cleanup! A lot more kids than adults, but the kids didn't mind!

## CUCC's SERVICE SUNDAY EVENT

May 19, 2019

Congregational Untied Church of Christ (CUCC) members and public volunteers planted the Doty Island Planters. Below volunteers are smiling despite a cool, wet day.



April 20, 2019

So, how many people can comfortably ballroom dance in the second floor of the Memorial Building? We know 82 works! We received many compliments on the event. We even received a crowd "ooooohhhh!" when we dimmed the new lights (that were donated by DIDC and Doty Island residents)!

Will we do it again next year? YES! Start your ballroom lessons today.





# MEMBERS OF THE DOTY ISLAND DEVELOPMENT COUNCIL

## INDIVIDUALS

Jennifer Ardnt  
Amy Barker  
William Becker  
Carol Deprey  
Sue Erdmann  
Gordon Eckrich  
Luci Edwards  
Kathryn Eisenreich  
Pat Farster  
Cindy Fitzgibbon  
Susan Fredericks  
Rex Gromer  
Laverne Kons  
Betsy Krizeneky  
David Lasfalk  
Brenda Lautenschlager  
Cari Lendrum  
Paul McAvoy  
Patricia Remick  
Stan Sevenich  
Charlie Sheppard  
James Taylor  
Lynn Thuren  
Gloria M. Thurner

## FAMILY

William Skarie &  
Anne Anderson  
Deb & Gerry Andrews  
Balogh Family  
Wally & Marshelle Bergstrom  
Rod & Debbie Birling  
Heather &  
Jean-Maurice Boyer  
Michael & Jehan Brown  
Bill Banti & Joy Cha  
John & Ayanda Crispin  
Jane & John Crowe  
Tim & Wendy Daanen  
Daniel Dubnicka  
Beth & Charles Dunning  
James & Emily Funk  
Butch & Julie Grondahl  
Brian & Stephanie Hodek  
Ron & Debra Hopfensperger  
Michael & Barbara Jirikowic  
Constance Kanitz  
Daniel & Alissa Kaufman

Kate & Peter Kelly  
Ron & Lynnette Klatt  
Rob & Jennifer Konitzer  
Warren & Roddie Larsen  
Andy & Theresa Lauer  
Danny & Kristen Leavins  
Richard Loehning  
Pat & Jean Lowney  
Craig & Michele Lynn  
Diane McDonald  
Leigh & Timothy McHugh  
Lara Vendola-Messer &  
Derek Messer  
Richard & Martha Moore  
Tom & Pat Mottard  
Jeff & Becky Nichols  
Dr. Joseph & Amanda  
Olsen  
Adria & Shiloh Ramos  
Christopher &  
Theresa Reuss  
Jim & Donna Roccio  
Benjamin S. & Tiffany  
Sams  
Merrie & Todd  
Schamberger

John & Holly Scharer  
David & Brenda Schrier  
David & Susan Schroeder  
Jerry & Penny Scribner  
Paul & Heather Stinson  
Michelle Storm  
Susan Strange  
Patrick & Marcia Streicher  
Mary Streufert  
James & Beverly Sund  
Joshua Ranger &  
Mary Thompson  
Kim & Ellen Vanderhyden  
Julien & Lindsay Wechseler  
Tim & Mory Wrase  
Craig & Anna Zoltowski

## SUSTAINING

Frederick & Susan Bartizal  
Mike & Terri Bonertz  
Joshua & Ruth Buss  
John & Liane Butitta

Judy & Charlie Catlin  
Jill Enos & Mark Pollard  
Scott Francis  
Jack & Marcia Fry  
Sarah Bauer &  
Jeff Heimerman  
Janet Kautz  
BG Kropidlowski  
Steve & Kim Langlais  
Jann & Bill McBride  
Arthur McFarland  
Joe & Melanie Miller  
Susan & Pat Morrissey  
James Murphy  
Kevin & Lorrie Pratt  
Michael Rass  
Ron & Kay Roberts  
Eric & Joanne Roush  
Lou & Junko Schifferl  
David & Kathleen Schwerbel  
Strandberg Family  
Karl & Mya Volkman  
Michael & Stephanie Vrabec

## CON-

Yuyun Sejati & Chris Jones  
Don Koskinen  
Bradley & Barbara  
Lauderdale  
Ann & Louis Lepore  
Susan Hibbs & David  
Magruder  
Don Merkes  
Jacy & David Park  
Wayne & Candy Rusin  
Michael Sajbel &  
Susan Allen  
Stef Holt & Joe Schena  
Jane S. Shepard  
Hanna Stadem  
Wayne & Ruth Streck  
Don & Janet Turner  
Jodi Van Rossum

## NON-PROFIT

Congregational United  
Church of Christ  
Menasha Historical Society  
Neenah-Menasha YMCA  
St. Paul Lutheran Church  
St. Thomas Episcopal  
Church

## HOME BUSINESS

The 4Sight Group—  
Neenah, WI  
Becker Electric/  
Lighting, LLC—  
William Becker

## BUSINESS PROVIDERS

Aunt Esther's Boutique  
Beiser Realty, LLC  
Brazee's ACE Hardware  
Club Liquor  
Dave Magruder, CPA LLC

Design 22, LLC  
Edward Jones—  
Chad Hopfensperger  
Emprize Brew Mill &  
The Attic  
Fish Fry Properties, LLC  
Fox Valley School of  
Massage, Yoga,  
Reflexology & Personal  
Training  
Freedom Bookkeeping  
Island Shores  
Kay's Salon, LLC  
Lemon Loves Lime  
Lendrum Photography—  
Jeff Lendrum  
Mentz Orthodontics  
Mom & Pop Place  
Renewed and Reclaimed  
Roberts, Ritschke, &  
Tyckowski, Ltd.  
Shellattes

## BUILDERS

Bomier Properties, LLC  
Megan & Tim Bodway  
Mowry Smith III  
Jersild Property, LLC —  
Randy Stadtmueller  
Thrivent Financial  
Nate & Holly Van Zeeland

## PATRONS

Patrick & Amy Galloway  
John & Mary Sensenbrenner

## PARTNERS

Richard McCrory  
Community First  
Credit Union



## TRIBUTING

Robert & Elke Ellis  
Arleigh Hubbard  
Dean & Judy Moede  
John, Kathy &  
Carol Peterson

## SUPPORTING

Deborah & Robert Benada  
Dianne & John Bergstrom  
Margaret L.  
Colucciello, PhD, RN  
Kim Davis  
Steve & Su Figi  
Carey-Marie Fleming  
Cullen & Sally Henshaw  
The Doug Horan Family





NONPROFIT  
ORGANIZATION  
U.S. POSTAGE  
PAID  
PERMIT NO. 40

Doty Island Development  
Council, Inc.  
P.O. Box 894  
Neenah, WI 54957-0894

**Email:**

dotyisland@gmail.com

**Website:**

www.dotyisland.org

**Phone:**

Jacy Park (920) 479-0894

The DIDC meets the 2nd and  
4th Thursday of every month  
at Island Shores from 7-8pm

131 E. North Water Street  
Neenah, WI 54956



follow us on  
**facebook**

## SIGN UP: Doty Island Development Council Membership

When you join the DIDC, you show your commitment to improving the quality of life for all Doty Island residents while preserving the vitality of a historic district of Neenah and Menasha.

DIDC is a 501c3 non-profit organization, so your dues and all contributions are deductible to the extent permitted by law.

Membership and contributions are DIDC's sole source of funding.

Sign up at **www.dotyisland.org**  
or complete this form and mail with your check to:  
DIDC—PO BOX 894, Neenah, WI 54957

Name: \_\_\_\_\_ Date: \_\_\_\_\_  
Company/Organization: \_\_\_\_\_  
Address: \_\_\_\_\_  
City, State, Zip Code: \_\_\_\_\_  
Email: \_\_\_\_\_

### Residential Membership Business & Non-Profit Partners

_____ Individual \$20	_____ Non-Profit \$65	_____ Partners \$1,000+
_____ Family \$30	_____ Home Business \$40-\$99	
_____ Sustaining \$50	_____ Providers \$100-\$249	
_____ Contributing \$75	_____ Builders \$250-\$499	
_____ Supporting \$100	_____ Patrons \$500-\$999	

### Endowment Fund

In addition to my regular dues, please add \$\_\_\_\_\_ to the DIDC Endowment Fund.