



Life & Times of Doty Island

UPCOMING Events

ALTERNATIVE CHRISTMAS MARKET

Sunday, November 24 | 9am-1:30pm | Congregational Church of Christ

SMALL BUSINESS SATURDAY

Saturday, November 26
Support our local businesses!

GATHER 'ROUND

Thursday, December 1 | 5-7pm
Downtown Menasha | Tree lighting, music, & festivities

LIVE NATIVITY AT CUCC

Friday, December 2 | 5-8pm
Congregational Church of Christ

A VERY NEENAH CHRISTMAS

Friday, December 2 | 6-8pm
Downtown Neenah | Live mannequins, reindeer, & fun!

DIDC'S ANNUAL MEETING & OPEN HOUSE

Thursday, December 8 | 6:30-9pm | Whiting Boathouse

UGLY SWEATER SHUFFLE

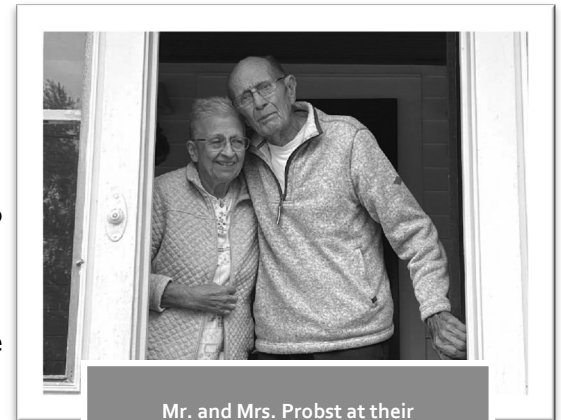
Saturday, December 10 | 8-11am | Loop the Lake—
Contact Neenah Parks & Rec for details

WINTER GALA

Saturday, February 4 | 12-3pm
Smith Park | Ice sculptures and more!

Slice of Life on the Island

There is a very narrow, one-way street in Neenah, on the Island, running north into Ahnaip Street facing St. Patrick's Church. It is a curious little street and if one were to try to navigate a turn-around because you went down the street the wrong way, well, it isn't easy. But, I found the house I was looking for, a neat-as-a-pin brick bungalow facing west, kitty-corner from the Neenah Club, Inc and the YouthGo on Nicolet Blvd. My quest was based on a recommendation by another DIDC board member, who happened to be walking home from the Neenah Club and stopped to chat with the elderly man standing outside of the house on Second Street.



Mr. and Mrs. Probst at their
Second Street, Island Home

Mr. James Peter Probst was on his tidy front lawn, puttering about, clearly enjoying our stunning fall weather and marveling at Mother Nature's autumnal splashes of emerald green, golden yellow, and crimson-painted leaves. The two men exchanged greetings and from that shared some talk. "A good story is here" our astute board member mused as he was departing, and so he suggested I check it out. I did; a good story it is and so, it must be shared! It isn't a revolutionary-type story. No hero escapades. No mysterious Island revelations. For certain it is a slice of life story; a very small story that warms the heart.

After I made a few visits, ringing the doorbell then pounding on the door to no avail, I braved it and walked along the drive to the very back of the house. Upon my first knock the screen door was opened by a small, elderly lady with piercing blue eyes. Jim's wife Mary Lou. Behind her, three steps up and into the kitchen stood a tall, lean and very curious man: Jim. I was invited in before I even got to finish introducing myself, with immediate apologies from the couple for the non-working front doorbell. Yes, they are *that* kind of people.

Jim Probst has always been a hard-working Island guy, he (Continued on Page 6)

BUY YOUR RAFFLE TICKETS NOW!

We love our Island. We love improving our community through beautification, service events, and community involvement. In order to continue to sponsoring these fun-filled activities, we need to be able to fund them. Here's your opportunity to support Doty Island and also have a chance to win custom made Doty Island art!

We've commissioned Clever Cuts N Carvings, out of Merrill, Wisconsin, to create a 3D cutout of Doty Island showing the surrounding bodies of water. This custom-made art is laser cut from reclaimed wood. It is 20"x20" and the retail cost is \$350. If you prefer to order your own Doty Island art, you can at www.itsmorethanamap.com.

Tickets are \$5 each or 5 for \$20. The raffle drawing will be held at our annual meeting on Thursday, December 8 at 7:30pm. We have a raffle license (#R0041092-A—99214). We will post the winners on our website in addition to notifying them through their contact information on their ticket.

Of the 400 tickets available, only 122 tickets remain. Call or text Jacy today at 920-479-0894 to arrange payment for yours.



Mark Your Calendar!

DIDC's Annual Meeting and Open House

Are you a member of Doty Island Development Council, (listed on the back cover)? If you said yes, you will soon receive your invitation to the Annual Meeting on Thursday, December 8th.

This year, though we would love to show off our new headquarters, we just aren't ready for visitors yet so the meeting will be held at the Whiting Boathouse. If you are not yet a member, you still have time to send in your membership – see the back page of this newsletter for details on how to join for 2023!

Come celebrate another year of accomplishments as well as the 30th anniversary of the Doty Island Development Council. The festivities begin at 6:30pm with a complimentary wine bar provided by Club Liquor. Hors d'oeuvres will also be provided. The meeting starts promptly at 7:00pm. Capacity is limited so RSVP to Michele at 920-540-0695 to claim your spot before it is too late!

The agenda includes:

- Mowry's Table Fundraiser (benefiting Youth Go)
- Community Awards
- Review of 2021 Annual Meeting Notes
- Review of 2022 Financials
- Review of 2022 Accomplishments
- Nomination of the 2023 Doty Island Development Council board members

We look forward to seeing you there!

Supporting Youth Through Mowry's Table

Doty Island residents have always been generous – and it shows! Since 2013, the Doty Island Development Council hosts an annual fundraiser to positively impact our community. Since the inception of Doty Island's annual charity event, Mowry's Table, supporters of Doty Island have donated over \$20,000.

THIS YEAR'S CHARITY

Youth Go, located on the border of Neenah and Menasha, offers a healthy and safe environment for kids (grades 5 through 12) to enjoy recreation, education and social events. Youth Go, Inc. is a non-profit drop-in center that was founded in 1969 by community members looking for a safe gathering place. The center strives to provide underserved and at-risk youth with opportunities to participate in programming in which they will grow as individuals and develop relationships with others.

PURPOSE OF MOWRY'S TABLE

DIDC established Mowry's Table to improve our community. Like its namesake, Mowry Smith, Jr, this fundraiser provides an opportunity to continue Mowry's love and dedication to his community.

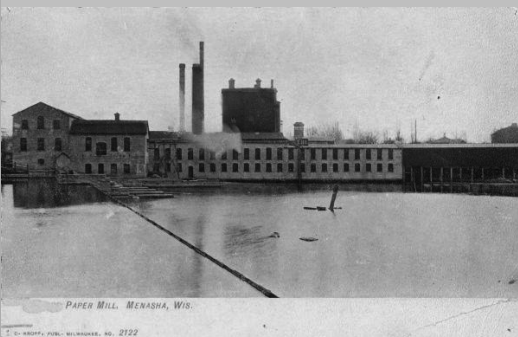
WE WILL MATCH

To encourage your donation to support Youth Go, Inc., DIDC will match the first \$1,000. Our goal is to raise \$2,400 (including DIDC's contribution). Please help us reach our goal!

HOW TO DONATE

Please donate before Christmas. DIDC will present the check to Youth Go, Inc. in January 2023. Here are some payment options:

- ⇒ Go to our website and use PayPal (fees apply). www.dotyisland.net
- ⇒ Contact us to pick up cash, check or money order. Our contact information is on the back of this newsletter.
- ⇒ Send a check or money order to the address on the back of this newsletter.



Did You Know...?

The Harvey Boehlein House was designed and built in 1940. Boehlein used recycled cream brick from the very first paper mill built in Menasha! The cream bricks were removed from the Island Paper Mill that was demolished in 1939. He had the bricks delivered to his home at 1103 Hewitt Street. Harry and his wife, Ruth, carefully removed the mortar. The garage was also built with the same brick, inside and out. During his life, Harvey owned the United Paper Corp in Menasha. Harvey was born on August 25, 1901 and passed in 2009 at the age of 107!

Bellwether Interior Design

Bellwether Interior Design, specializing in residential construction and remodel and small commercial design, is a local company owned and operated by a true Islander Leslie Mayer. Leslie was born and raised not just in the area but actually on Doty Island. From being born at Theda Clark and growing up on Forest Ave, to owning her first home on 5th Street, and now finally calling Park Drive home, Leslie is proud to call Doty Island home.

Leslie began Bellwether in 2010. She studied Design at University of Minnesota Twin Cities and had thought she would pursue commercial design and hospitality. She loved the idea of taking chances and having more visibility for her work. She pictured the general public enjoying her spaces and engaging with something she created. Alas—the real world has its own plan and after graduating into an economic recession she ended up working in facilities management where she began to learn that when it comes to large commercial projects,



the designer is but a small piece of the puzzle and ultimately does not have full control of the design work. After returning to the Island for a short-term contract position, her local contacts sought her out for her good eye and passion to see if she did residential design. Though she had not pictured herself focusing on residential design, because of the local support she found herself on a new path doing freelance residential design projects—from there Bellwether was born. Leslie says she “loves owning a design company that specializes in residential and small commercial design because we do have full control. We select everything from your roofing down to your bedding if you let us.” In discussing her favorite part

of design, Leslie talked about change—she craves it! She has created a business that fills her everyday with helping people change up their spaces. She says she loves getting to know her clients and finding out what they need and like so she can incorporate it

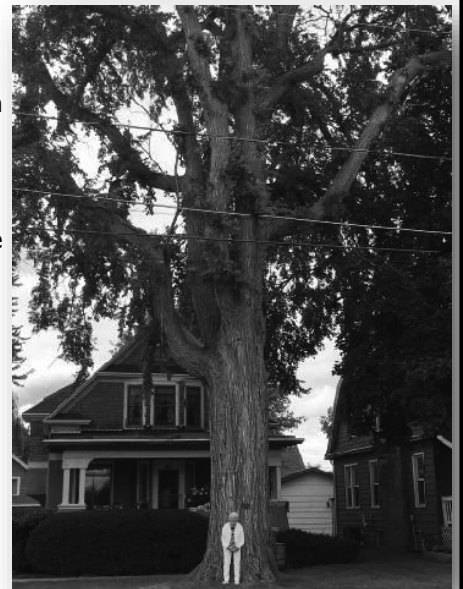
into their space to fit their needs, “Our job is to pull out your personality into your space.” Of course, the goal of any design is to create a beautiful and functional space, but Leslie counts her successes based on how well she can create a design that reflects the personality of each individual, family, or business. When twisting her arm for a favorite kind of project, Leslie noted she loves working on historic homes and businesses—which makes (Continued on page 7)

Rare American Elm Tree

Arline Dabill has made it a mission to protect the American Elm Tree in her front yard from Dutch Elm Disease. She has been using a fungicide to protect the tree from infection.

Arline’s tree is the oldest American Elm Tree on Doty Island per the Wisconsin Community Tree Map.

Next time you’re on Forest Ave, look for this majestic tree.



Owner, Arline Dabill, poses with her American Elm tree, which is estimated to be 226 years old!

Future Neenah Inc. Names New Director

Future Neenah Inc. has selected Brent Bowman as its new executive director. Bowman will lead the nonprofit organization, funded by individual donations and business partnerships, which engages in the leadership, management, and funding of a wide range of programs, projects, and events in Neenah. The organization focuses on economic development and cultural vitality throughout the Neenah area.

Bowman will be the ninth person to hold the executive director

position since the organization was established in 1983. He has 37+ years of experience in nonprofit leadership, mostly through the Boy Scouts of America, where he was involved in leadership, fundraising, fiscal management, staff hiring, development, and strategic planning. In Bowman's most recent position he served as the development and outreach manager for a nonprofit in Appleton, whose mission was to help older adults to remain independent through fall prevention

efforts, overseeing fundraising efforts, business partnerships, and community outreach.

Bowman and his wife relocated to Neenah from out of state in 2011 and he said they found it to be an amazing community to live, work, and enjoy. "I'm honored to join the team at Future Neenah and look forward to serving the community alongside the board of directors, staff, and volunteers," he said. Board President Eric Glassco expressed his gratitude for the

individuals that helped with the search and hiring.



Brent Bowman, new Executive Director for Future Neenah, Inc.

Judy La Count—Our Island Cross-Generational Crossing Guard

Judy La Count starts every morning during the school week the same way—she wakes up at 6:30, has a cup of tea, and gets ready to go to work. She is a crossing guard. She knows those kids need her—rain or shine. Judy spent some of her childhood growing up on the island, specifically Naymut Street. She knows the importance of neighborhood schools and how many kids need help crossing busy streets. That's part of the reason she is on her 42nd year as a crossing guard, with 22 of them right in front of Roosevelt



Elementary School. Crossing guards in Neenah are employed by the Neenah Police Department and Judy is their longest standing employee. When asked her thoughts on Roosevelt closing, she emphasized how sad she is. She is worried about the logistics of children getting to and from school safe and on time. Judy has loved her time as a crossing guard and when asked if she plans to continue to work at a new

location she said enthusiastically that she will absolutely continue to work—if the location is right. At 82, Judy admits that cold, rainy days are hard, but these kids depend on her. She has gotten to know

families so well that she has been invited into their homes for parties and gatherings. She says one of her favorite things throughout the years has been meeting the parents of some of the children, and realizing she was their crossing guard when they were children as well. The children are her number one priority, but if she has a free moment, she loves to waive or have a chat with residents. She hopes for continued safety and for people to always make a complete stop at the intersection of Third and Forest.

After spending over an hour with Judy, it is clear she needs these children as much as they need her. Doty Island has been lucky to have her for the last 22 years.

Slice of Life on the Island (continued from page 1)

tells me. He has certainly slowed some at age 90, quite naturally. He moves carefully. He proudly shares he has an exercise room in his basement. He even rigged up his own type of exercise bike. "But I don't drive anymore," he adds. "I leave that



others."

We all took seats at the wooden kitchen table, bare except for a small dish of mixed berries. The house gleamed. Neither a speck nor a crumb to be seen. Did they know I was coming? The original wooden floorboards looked new and beautiful. Nothing seemed out of place. It looked like it might have when it was first built back in the 1920s. It is the house that stands today on Second Street in Neenah on the Island and the only house Jim has ever known. In fact, he was born in the house, delivered by his midwife aunt, after his father purchased it in 1925. (Okay—he confessed he did live in a 'duplex' in Dog Town for about two weeks after he married

Mary Lou in 1959. "Hey, why the heck is it named Dog Town, anyhow?" he blurted out. I told him: many years ago, there were a lot of dogs running around in Dog Town. Hence, *Dog Town*. He liked that. Jim laughs readily and is quick with one-liners, too.) The novelty of Jim having been born in the house he then grew up in and stayed in to this day shouldn't be lost: it's a rare thing. When the 'average' person changes homes approximately six to eight times in a lifetime, it is really a rare thing. In 1958, when his mother died, Jim bought the house. His Army years were done, 1956-1958. The second floor had been converted by his father to rental space and it saw many renters over the years. It is now used as a guest space when Jim and Mary Lou are visited by their children. Gregory, one of the Probst' children, happened to be visiting from California when I came by. He joined us at the kitchen table and listened politely, only once or twice gently tweaking his father's prolific memories. Jim spoke fondly of his childhood on the Island. He spent hours at Doty Park. He shared some funny scenes, one of them being his intent to climb a very tall pole, just BECAUSE. However, he couldn't get down and his friend finally convinced him to jump, assuring him he would be caught. He did and he was. Jim enjoyed telling that story and then offered scenes of his antics at both St. Mary's and St. Patrick's. One scene involved fooling around with some scaffolding at St. Patrick's until the custodian yelled at him. "I heard him say to another person, 'I wouldn't give a matchstick

for that kid.'" Jim had a good laugh telling the story. "If you can't be smart," Jim chuckled, "at least be good!" He found employment at the Marathon Paper mill, a significant employer then, but left after awhile because he was "always looking, always looking for something better." He shakes his head, saying, "I was a fool. That place was secure, offered good pay and benefits." He worked at Automotive Supply, now the YouthGo of Menasha, a skip across the street from his house. Later, he worked at John Strange Paper Company, where he met Mary Lou. They married in 1959. Jim stayed at John Strange up to his retirement. It was steady work and they lived modestly, he said. Mary Lou stayed home with the four kids after working as a private secretary at John Strange. But Jim was clearly most tickled to recall his time spent on the Island as a kid. He cavorted in Doty Park, swam in the canal and noted that baseball "was very big" in the park back then. Sharing this story and others came easily for Jim. But contemplating his family's history and all that has passed eventually brought him to a standstill. The kitchen became very quiet. He began to softly cry. It was, as they say, a moment. He bowed his head then looked up incredulously and gently said, "Oh. I'm crying."

After a few more moments of sharing, with Jim filling in some spots and pausing to marvel at the beauty of his wife's eyes - "My lovely Mary Lou. Oh such blue eyes!" - it was time for me to go. It was a wonderful

Announcement: DIDC has an Office Location



financials, surveys and other notables that tell the legacy of DIDC take up a few boxes as well. It'll be so nice to have everything in one location with multiple board members having access to it.

Our bi-monthly meetings will be held in the Community Room downstairs. Since 2020, we've been "couch-surfing" – fortunately, many community members opened their doors, porches and backyards to host us. With having a permanent location, we will have a reliable meeting location available for the public to attend at any time.

At this time, we are not planning on having any scheduled "office hours", but this business location offers DIDC a central location on the island for our board members and volunteers to complete community projects – sometimes with other organizations.

This year mark's DIDC's 30th anniversary! We are excited to announce that for the first time in our history, we have an official business location. As of this month, DIDC has been approved to join the other non-profit organizations in the E.D. Smith Building located at

181 E. North Water Street, Neenah.

Our 11x17 office space is located on the 2nd floor. The office will also contain storage for our many events. You wouldn't believe how much stuff is needed over the course of a year's events! Signage for

rummage sales, PorchFest and History Walk take a lot of space. Not to mention the totes of dishes, utensils, hot pots and other items for the Winter Gala, Hometown Halloween and Clean Up Day. Thirty years of DIDC records – including agendas, minutes,

Bellwether Interior Design (continued from page 4)

Doty Island the perfect place for Bellwether to call home. Leslie's dreams for Bellwether stem far beyond her, which is why she did not name the company after herself; she hopes it lives on well past her lifetime. So what does Bellwether mean? The word stems from the Old English word for sheep that wears the bell, or leader. Today it means forecaster or trend setter—which is Leslie and her team do. She began this work, with her dad at her side as her first contractor, with a focus on helping local residents

love the spaces they were in versus selling a home in an unfavorable market.

Bellwether today still pursues the goal of helping people love their spaces and Leslie is supported by Dylan Schnese, currently the only other employee at Bellwether. Dylan has been working with Leslie for nearly six years and has been an integral part of the success they have seen. Both Dylan and Leslie run jobs independently, working primarily with their own general contractors and many local builders. Over her years in the industry, Leslie has put together a list of preferred subcontractors for every trade. They can

help you make the space of your dreams.

Finally, when asked if she has any advice for her neighbors who might be looking at any interior design projects, whether it be new construction or a remodel, she emphasized the importance of focusing on things you truly like instead of following trends. Because trends are always changing, things come in and out of style, but Leslie says "if you love it, it's going to feel timeless to you."


karl volkman .com
Your real estate resource



Karl Volkman
920-450-9400
Email: karl@karlvolkman.com
www.karlvolkman.com

FIRSTWEBER
— REALTORS —

Award-winning author of *Intention Fiction*
VIVIAN PROBST



English: Only:
The Little Black Book for BLUE People
The Timekeeper's Shop
Death By Roses
I Was a Top-10 Wife Until I Learned... THIS!

English & French:
The Woman Who Forgot Who She Was
#1 Drowning Her Grief
#2 Working From Her Weariness
#3 Pending
#4 Pending
#5 Pending

**BRAZEE
HARDWARE**
Established 1967

**516 N. Commercial Street
Neenah, WI 54956
(920) 722-1113**

COMMUNITY FIRST
CREDIT UNION
We'll Find A Way!

**125 E. Forest Avenue – Neenah
201 Main Street - Menasha**

Emprize Brew Mill
Craft beers, ciders and foods

**BUY ONE GET ONE FREE
Tap Beer**

200 Main St.
Menasha, WI 54952
920-486-1539
info@emprizebrewing.com
www.emprizebrewing.com




SA
**Stadtmueller
Associates**
placemaking

333 N. Commercial Street
Neenah, Wisconsin
stadtmuellerandassociates.com
920-716-7297

YOUTHgo

**213 Nicolet Boulevard
Neenah, WI 54956
(920) 722-1113**

MAKE A BIG IMPACT SHOP SMALL

SMALL BUSINESS SATURDAY
NOVEMBER 26, 2022



Small Business Saturday

Saturday, November 26, 2022 is Small Business Saturday—the Saturday after Thanksgiving. It is a day to celebrate and support our small neighborhood businesses and all they do for our Doty Island community. This year, we know that small businesses need our support more than ever as they navigate, retool, and pivot from the effects of the pandemic, supply chain issues, and labor issues. Please support our small businesses by shopping local this holiday season.

Founded by American Express in 2010 and officially cosponsored by U.S. Small Business Administration since 2011, Small Business Saturday has become an important part of small businesses' busiest shopping season. Historically, reported projected spending among U.S. Consumers who shopped at independent retailers and restaurants on Small Business Saturdays reached an estimated \$23.3 billion according to the 2021

Small Business Saturday Consumer Insights Survey. Some other fun facts:

- 33.2 million small businesses currently operate in the U.S.
- Small businesses generated 12.9 million net new jobs over the past 25 years, accounting for two out of every three jobs added to the economy
- In 2021, 51 million shippers participated in Small Business Saturday
- More than 50% of Americans say they will shop small on Small Business Saturday

For your convenience, we have compiled a list of retail, services, restaurants, and home businesses on Doty Island at www.dotyisland.net/business-directory. Also, check out our downtowns—both Neenah and Menasha have shops and restaurants to keep your feet busy on the big weekend. Remember shop small!

**GOOD FOR
\$3 OFF
any apparel item!**

330 N Commercial
St, Neenah
920-886-3094



CLUB LIQUOR
234 Main Street
Menasha, WI 54952
(920) 725-9247

Cheers!





Giving Tuesday is a global generosity movement unleashing the power of radical generosity. Giving Tuesday was created in 2012 as a simple idea: a day that encourages people to do good. Since then, it has grown into a year-round global movement that inspires hundreds of millions of people to give, collaborate, and celebrate generosity.

Join the movement and give—each Tuesday and everyday—whether it is some of your time, a donation, or the power of your voice in your local community.

It's simple: make someone smile, help a neighbor or stranger, show up for an issue you care about, or give some of what you have to those who are in need; every act of generosity counts and everyone has something to

contribute toward building the better world we all want to live in. Lets work together to spread joy and kindness.

Check out Volunteer Fox Cities site at www.volunteerfoxcities.org/ holiday-volunteering-wish/lists/or a list of volunteer and giving opportunities specific to this holiday season.

Sweet Treat WEEKEND

December 1st - 4th

Saint Patricks Catholic Church
324 Nicolet Blvd, Menasha



www.stpatricksmenasha.org



Together we give.

Nov 29, 2022

GIVING TUESDAY

bellwether
INTERIOR DESIGN

www.bellwetherinteriors.com

the Y
YMCA

110 W.N.
Water Street
Neenah, WI 54956
(920) 729-9622

CENTURY 21
Ace Realty

Mark Mayer - 920.470.6217
mark.mayer@c21ace.com
303 S Blueground Dr. Appleton WI 54911



New Perspective
LIVING LIFE ON PURPOSE®

131 E.N. Water Street, Neenah
920-785-8064

Integrative Nutrition Health Coach

Renee Schmidt
9204278414
wellnessliving4you@gmail.com
wellnesslivingonabudget.liveditaurora.com




LENDRUM PHOTOGRAPHY LLC



BOMIER PROPERTIES
Commercial Realtors & Developers
info@bomier.com
(920) 739-5300

COMMERCIAL REAL ESTATE PROFESSIONALS



Chad Hopfensperger, AAMS®
Financial Advisor

307 N Commercial St Suite 100
Neenah, WI 54956
Bus. 920-725-7456 TF. 800-755-4894
Fax 888-862-0517
chad.hopfensperger@edwardjones.com
www.edwardjones.com/chad-hopfensperger

Edward Jones
MAKING SENSE OF INVESTING

PorchFest August 2022

This year's PorchFest had a great turnout and beautiful weather. Attendees relaxed and visited with their neighbors while listening to the various musicians. We estimate over 2000 attendees! This event would not be possible without the support of our community and our local businesses that sponsored the event. Thank you!



Hometown Halloween

Hometown Halloween was on October 27th and had another successful year. Menasha had about 1000 attendees and DIDC went through 10 gallons of cider!



Mystery Walk—September 2022

Another great turnout! We had over 2000 likes on Facebook and went through over 800 flyers—even with the map available for download online. Participants came from all over the Fox Cities to learn about our Doty Island Community. Many saw the event as a type of scavenger hunt with some of the signs being more difficult to find than others. Fun was had by all that participated!



Doty Island Development Council Membership

Individual

Carol Deprey
Kathryn Eisenreich
Pat Farster
Cindy Fitzgibbon
Rex Gromer
Anne Harmel
Mary B. Jensen
Laverne Kons
Cari Lendrum
Richard Loehning
Troy Seehafer
Charlie Sheppard
Patrick Sommers
Lynn Thuren
Brandy Werner

Family

William Skarie & Anne
Anderson
Jacob & Christina
Anderson
Parry Family
Rod & Debbie Birling
Birschbach Family
Joshua & Ruth Buss
Jane & John Crowe
Beth & Charles Dunning
James & Emily Funk
Butch & Julie Grondahl
Lisa Hansen
Becky & Steven Heiner
Tom & Katie Hobart
Brian & Stephanie Hodek
Ron & Debra
Hopfensperger
LaFaive Family
Mark & Susie Lange
Warren & Roddie Larsen
Pat & Jean Lowney
Craig & Michele Lynn
Dan & Tammy Malewski
Paul & Patricia Meier
Lara Vendola-Messer &
Derek Messer
Robert Mitchell
Dean & Judy Moede
Jeff & Lori Murphy
Jeff & Becky Nichols

John, Kathy & Carol
Peterson
Bob & Sally Plath
Shiloh & Adria Ramos
Donna & Ben Richardson
Scott & Tiffany Sams
John & Holly Scharer
Parry-Schiller Family
Mike & Aubrey
Schroeder
Jerry & Penny Scribner
Sewall Family
Denny & Ronnie Simon
Lisa & David Strandberg
Patrick & Marcia
Streicher
James & Beverly Sund
James & Monica Taylor
Mary Jane Van Lieshout
Dan & Michelle Westphal
Tim & Mory Wrase

Sustaining

Jim & Jeanette Baggot
Deborah & Robert
Benada
Wally & Marshelle
Bergstrom
Jeffrey Bierman
Mike & Terri Bonertz
John & Liane Butitta
Erin M. Culligan
Scott Francis
Jack & Marcia Fry
Sarah Bauer & Jeff
Heimerman
Janet & Gregory Kautz
Bradley & Barbara
Lauderdale
Andy & Theresa Lauer
Ann & Louis Lepore
Mark Mayer
Leslie Mayer
Jann & Bill McBride
Gary & Kathy Nichter
Jacy & David Park
Patricia Remick
Christopher & Theresa
Reuss

Merrie & Todd
Schamberger
David & Susan Schroeder
David & Kathleen
Schwerbel
Deby & Jim Trader
Kim & Ellen Vanderhyden
Julien & Lindsay
Wechseler
Craig & Anna Zoltowski

Contributing

Frederick & Susan
Bartizal
James Murphy
Ron & Kay Roberts
Mary Ellyn Wroblewski

Supporting

Ellen Anderson
Dianne & John Bergstrom
Margaret Coluciello,
PhD., RN
George & Shanna Davis
Sue Erdmann
Steve & Su Figi
Harding Family
Sally Henshaw
Arleigh Hubbard
Amanda & David
Izquierdo
Yuyun Sejati & Chris
Jones
Katherine Kelly
Ron & Lynnette Klatt
Bob & Debbie Korzenski
Bernadette G
Kropidlowski
Catherine McClone
Don Merkes
Christopher Peterson
Mark Pollard & Jill Enos
The Probst Family
Michael Rass
Wayne & Candy Rusin
Michelle Storm
Don & Janet Turner
Mark & Ellen Van Pay
Karl Volkman
Kevin Worm

Non-Profit

Congregational United Church
of Christ
Menasha Historical Society
Neenah-Menasha YMCA
St. Patrick's Catholic Church
St. Paul Lutheran Church
St. Thomas Episcopal Church

Businesses

Corr Opticians
Wellness Living on a Budget

Providers

Brazee Ace Hardware
Club Liquor
Emprize Brewm Mill
Lendrum Photography, LLC
New Perspective Senior Living
Larry Reddin

Builders

David & Kristine Sexton
Edward Jones
Jersild Property LLC
Michael & Stephanie Vrabec
Family Fund (Community
Foundation for the Fox
Valley Region)

Patrons

John & Mary Sensenbrenner
Julie Waite
Nathan & Holly Van Zeeland
Family Foundation
Patrick & Amy Galloway

Partner

Mowry Smith III
Community First Credit Union

When you join the DIDC, you show your commitment to improving the quality of life for all Doty Island residents while preserving the vitality of a historic district of Neenah and Menasha.

DIDC is a 501c3 non-profit organization, so your dues and all contributions are deductible to the extent permitted by law.

Membership and contributions are DIDC's sole source of funding.

Sign up at our website: www.dotyisland.net or complete this form and mail with your check to: **DIDC – 181 E North Water Street, Unit #222 NEENAH, WI 54956.**

Doty Island Development Council Membership

Name: _____ Date: _____

Company/Organization: _____

Address: _____ City, State, Zip: _____

Email for event notifications: _____

Residential Membership

_____ \$20 Individual
 _____ \$30 Family
 _____ \$50 Sustaining
 _____ \$75 Contributing
 _____ \$100 Supporting

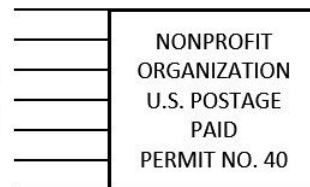
Business & Non-Profit

_____ \$65 Non-Profit
 _____ \$40-\$99 Home Business
 _____ \$100-\$249 Providers
 _____ \$250-\$499 Builders
 _____ \$500-\$999 Patrons

Partners

_____ \$1000+

Endowment Fund: In additional to my regular dues, please add \$_____ to the DIDC Endowment Fund to ensure we exist for many, many generations.



Doty Island Development Council
 181 E North Water Street Unit 222
 Neenah, WI 54956

Phone: (920)479-0894
 Jacy Park—President
 Email: dotyisland@gmail.com
 Website: www.dotyisland.net

DIDC meets the 2nd and 4th Thursdays of each month from 7-8pm in the lower level of the ED Smith Building at 181 E North Water Street.